



THREE BRIDGES OAK PRESERVE

The 103-acre **Three Bridges Oak Preserve** (TBOP) is three miles west of Atascadero's city center, bordered on the north by Atascadero Creek and on the south by chaparral and oak woodland.

The 2.5 mile trail system consists of both multi-use trails (hikers, equestrians, bicyclists) and hiker-only sections. The trails are suitable for all ages, including children and seniors.

Starting here at the trailhead, elevation 940', you begin on the **Meadow Trail**. The trail leads you underneath Highway 41 and across Atascadero Creek to the next kiosk. This trail takes you through a mixed riparian (creek) habitat and a grassland meadow. Continuing up the trail, you come to the lower junction of the **Oak Woodland Loop Trail**. This loop trail takes you through an oak woodland with Blue Oaks and Coast Live Oaks. This shaded woodland trail is open to hikers, cyclists, and equestrians.

From the Loop Trail's upper junction, the **Lookout Trail** gains elevation out of the mixed forest into chaparral, ending at a scenic overlook. The overlook, at 1250' elevation, affords views of Atascadero and the surrounding rural hillsides. *The Lookout Trail is multi-use, but the Madrone Trail beyond is restricted to hikers only.* Tie-ups for horses and bicycles are available if you want to hike to the top of the Preserve. The Madrone Trail continues past the 1250' overlook, through mixed flora to the highest elevation on the Preserve, at 1620'. From the trailhead to the highest point is 1.9 miles.

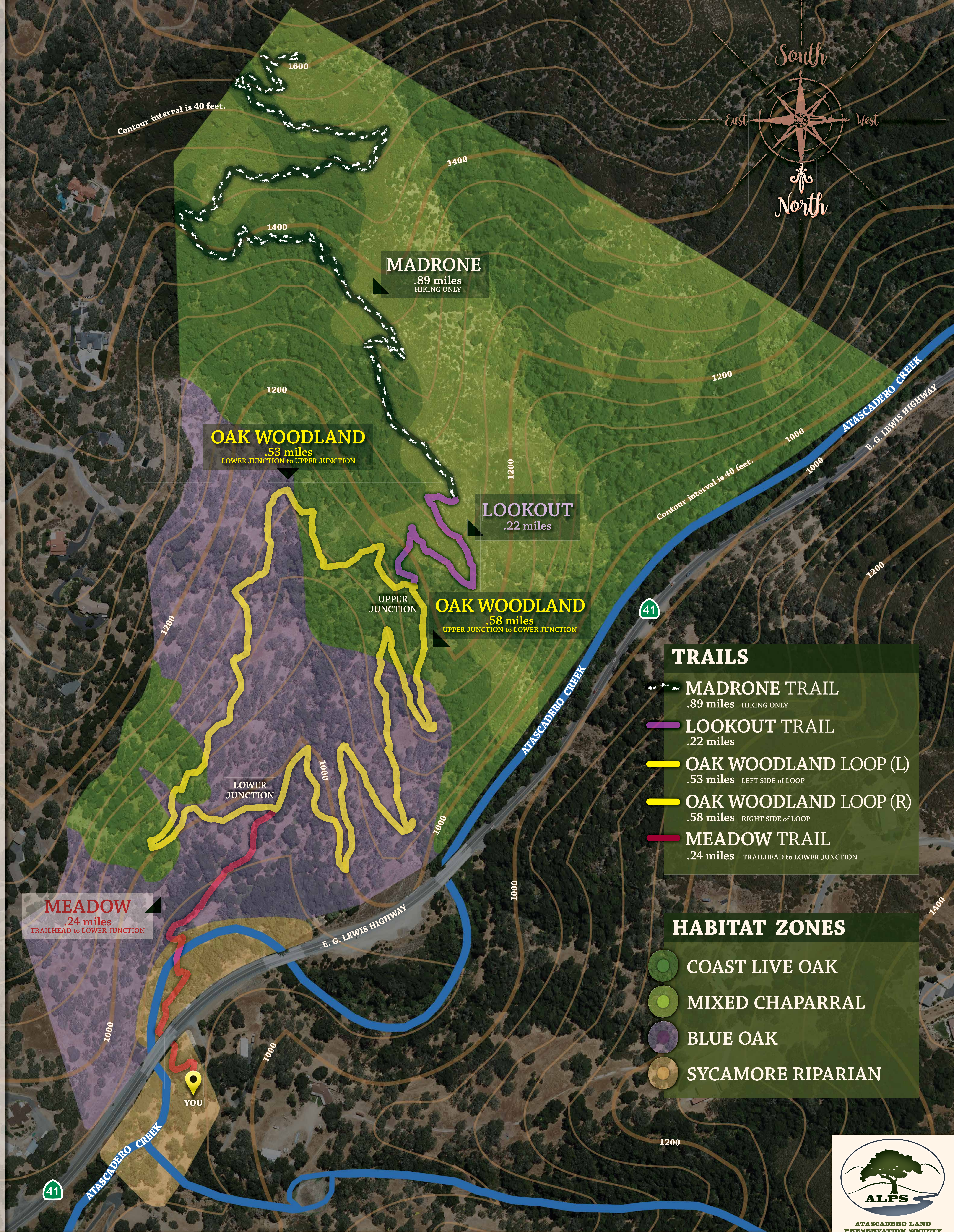
Gaining in elevation along the **Madrone Trail**, hikers will discover small groves of madrone trees, oaks, tall ceonothus and golden fleece. Hikers will often be in the shade on the Madrone Trail – a welcome relief during a summer hike. Toward the top of the trail, hikers will encounter stands of manzanita before arriving at the trail's end. The rocky vista point offers hikers a chance to sit and enjoy sweeping views of northern San Luis Obispo County.

The **Atascadero Land Preservation Society**, ALPS, owns the Preserve and has partnered with the City of Atascadero to develop a trailhead and a multi-use trail system open to the public. In addition to this preserve, ALPS also owns and maintains **Adobe Springs** and the entrance to **Stadium Park**, which includes the beautiful **Bill Shepard Native Plant Garden**.



Please support the **Atascadero Land Preservation Society!**

A heartfelt thank you to everyone who's had a hand in the preservation of this special place, from fundraising and managing the technical details to trailbuilding and maintenance.



TRAILS

- MADRONE TRAIL**
.89 miles HIKING ONLY
- LOOKOUT TRAIL**
.22 miles
- OAK WOODLAND LOOP (L)**
.53 miles LEFT SIDE of LOOP
- OAK WOODLAND LOOP (R)**
.58 miles RIGHT SIDE of LOOP
- MEADOW TRAIL**
.24 miles TRAILHEAD to LOWER JUNCTION

HABITAT ZONES

- COAST LIVE OAK
- MIXED CHAPARRAL
- BLUE OAK
- SYCAMORE RIPARIAN

