

ALPS

Atascadero Land Preservation Society

ALPS was incorporated in 1991 as an all-volunteer non-profit to conserve natural areas within Atascadero. In 2016 the Atascadero Native Tree Association (ANTA) joined under the ALPS umbrella. ALPS strives to provide recreational and educational opportunities where consistent with its mission of preserving environmentally significant open space and native trees.

We work toward responsible stewardship of our land by providing trails, informational signage, wildlife habitat protection, and watershed conservation. As an all-volunteer organization ALPS relies solely on private donations and grant opportunities. Please join and support at: www.supportalps.org

ALPS is steward to four properties totaling 125 acres within Atascadero City limits: Adobe Springs Nature Preserve, Atascadero Creek Reservation, Stadium Lane and Three Bridges Oak Preserve.

Adobe Springs Nature Preserve

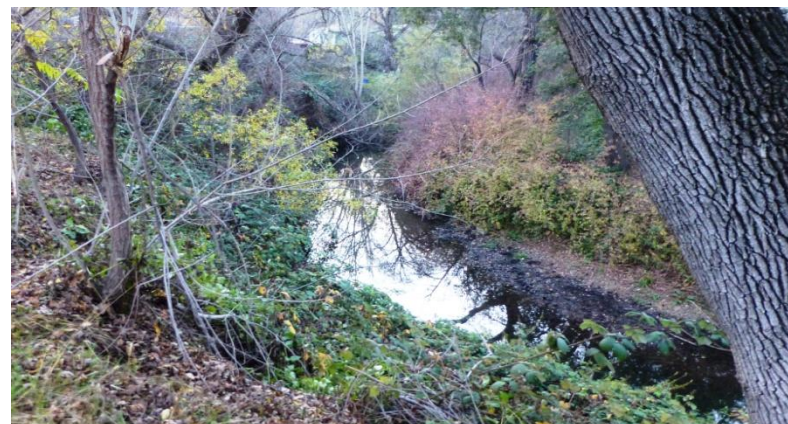
Adobe Springs Nature Preserve includes five acres with year-round seeps and a spring that harbors native willow, sycamore, oak, and cottonwood trees and is home to many native animals. The Preserve is not open to the public. Docent led tours are available upon request. Nearby is the site of the Estrada Adobe built in 1812 as an outpost of Mission San Miguel.



Adobe Springs Nature Preserve sign located along Traffic Way

Atascadero Creek Reservation

ALPS oversees the 11 acres of Atascadero Creek streambed and adjoining easement on the east side of Atascadero. The creek is one of the few upper Salinas tributaries with documented steelhead in an urban setting. ALPS works to preserve, protect, and promote the creek in its native state. There are no tours of this property in order to maintain the creek in its natural state as much as possible.



Atascadero Creek Reservation property

Stadium Lane

Stadium Lane is comprised of five acres at the entrance to Stadium Park, a native woodland park with a rich local history located within two blocks of Atascadero's city center. It showcases the Bill Shepard Native Plant Garden which visitors can enjoy before entering the trail system of the main park. An informational kiosk highlights the park history and the garden along with tips on native plants that grow well in the Atascadero area. The ALPS Trail switchbacks through the garden and up the hillside providing a scenic view of downtown. The Marj Mackey Trail parallels the access road going into the bowl. Both trails lead to the 74 acres of the City owned Stadium Park which offers great hiking, biking and equestrian trails for all users. The park offers a quiet respite for busy city workers and a venue for exercise. The park is open from dawn to dusk. Dogs are allowed on leash.



Stadium Lane kiosk and the Bill Shepard Native Plant Garden

Three Bridges Oak Preserve

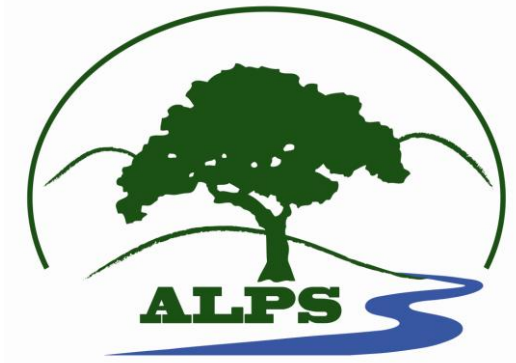
Three Bridges Oak Preserve consists of 103 acres and three miles of multi-use trail on the west side of Atascadero. The unique north facing slope showcases four different habitats that include riparian, oak woodland, chaparral and coastal mountain ecologies. The trail accommodates hikers, bikers and equestrians. Dogs are allowed on leash. The preserve features informational kiosks and signage focusing on the preserve's native flora and fauna and unique features. Trailhead access is off of the western most section of Carmelita Avenue. Directions to the trailhead, trail maps, and informational signage can be downloaded from the ALPS website. The Preserve is open from sunrise to sunset, seven days a week. The preserve is closed during periods of high water in Atascadero Creek. Check website for status.



Three Bridges Oak Preserve Oak Woodland Loop Trail



Vista from top of the ALPS Trail at Stadium Lane



Atascadero Land Preservation Society
Saving Open Spaces



Vista from top of Three Bridges Oak Preserve

Support and Volunteer with ALPS

Visit our website at

www.supportalps.org

Click on "Join, Renew, Donate" or "Volunteer"

ALPS

P.O. Box 940

Atascadero, CA 93423

www.supportalps.org